



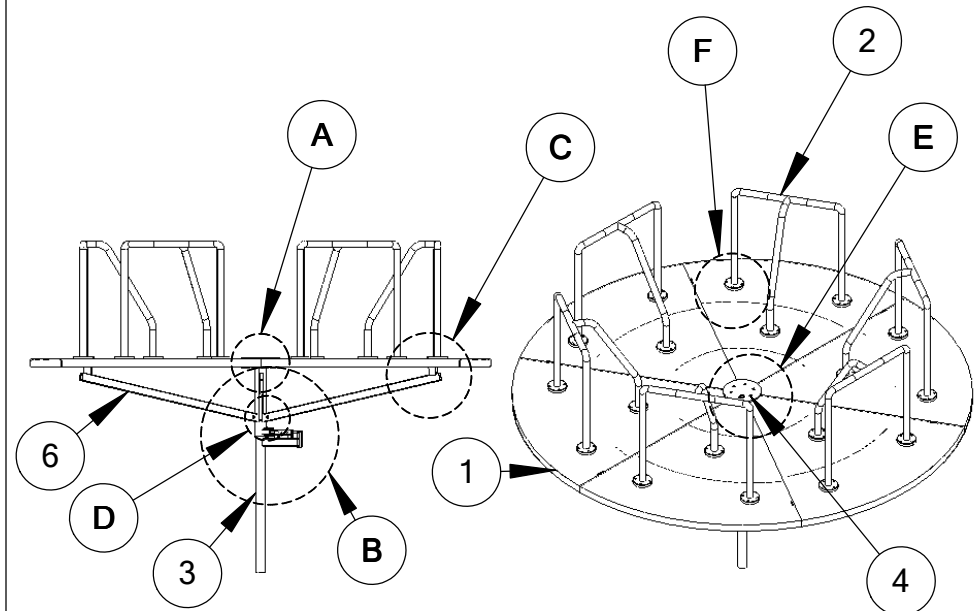
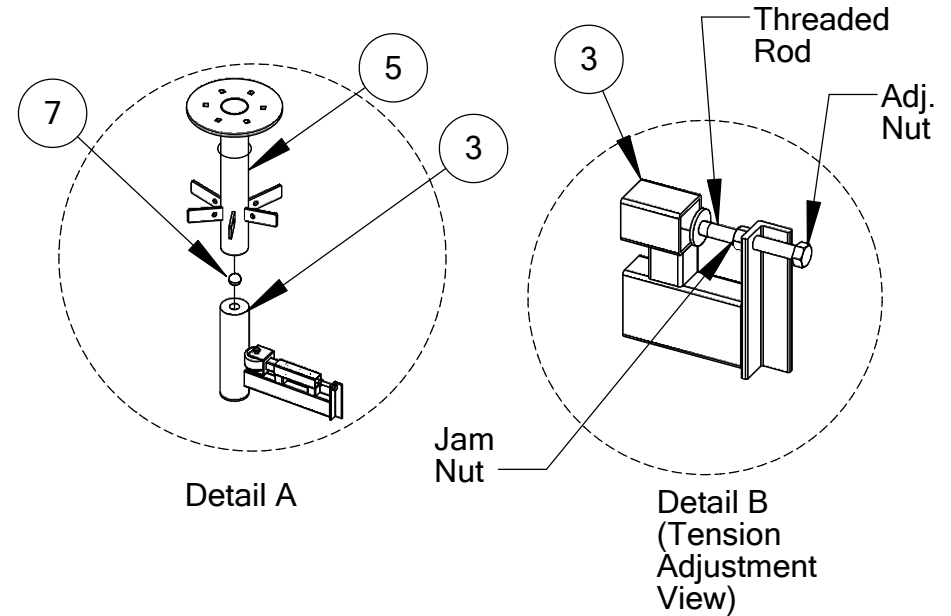
# MERRY-GO-ROUND 10'

301-146

ITEM NO.	PART NUMBER	DESCRIPTION	QTY.
1	405-010	Merry-Go-Round Platform 10'	6
2	913-323	Merry-Go-Round Handrail "U"	6
3	913-379	2.5" Post Assy for 10' MGR	1
4	336-046	Center Hub Disk for 10' MGR	1
5	913-377	Center Hub for 10' MGR	1
6	913-378	Support Bars for 10' MGR	6
7	336-044	1-1/2" Ball Bearing for 10' MGR	1
8	336-030	Grease Fitting (pk of 10)	.2
9	316-801Z	1/2" Flat Washer Zinc	6
10	226-802Z	1/2" Nylon Lock Nut Zinc	6
11	126-810	1/2" x 4" Carriage Bolt	6
12	126-707BPS	3/8" x 1-1/2" Button Pin SS	107
13	316-601	3/8" Flat Washer	214
14	226-602	3/8" Nylon Lock Nut Ss	107
15	416-505BPK	7/32" Long Arm Btn Pin Key	2
16	917-151	Touch up Paint (yellow)	1

## INSTRUCTIONS:

1. Dig footing 3' deep x 3' wide.
2. Place either 10: block in bottom of hole or pour 10" of dry concrete in bottom of hole.
3. Place post in hole making sure the speed governor is above ground level at least 2".
4. Pour mixed concrete into hole making sure the post stays level. Pour concrete just above the rebar supports on top. Will use approx. 16 -80lbs. bags.
5. Let stand min. of 48 hrs. before installing deck.
6. Place 1-1/2" bearing into pocket on top of post and place center hub over post as shown in Detail A.
7. Install the 6 support bars on tabs of center hub per Detail D.
8. Begin installing the 6 platform sections as shown in Detail E. This will require the use of at least one helper. The carriage bolts are a tight fit and may require the use of a hammer to drive them flush onto the center hub disk. As you build make sure to install all hardware along each section as shown in Detail C. Not: As you build it will get more difficult to line up



## INSTRUCTIONS CONTINUED:

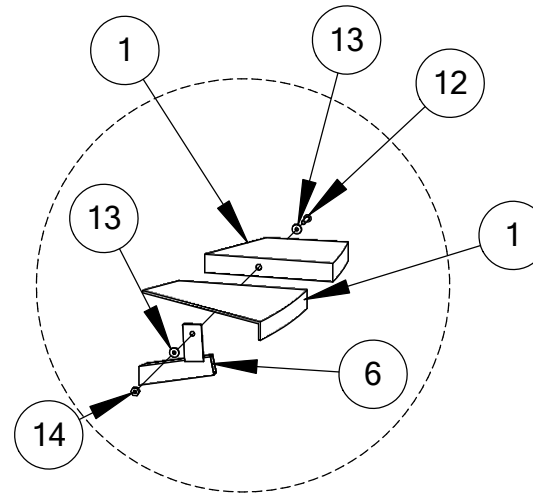
the holes so it may be effective to use a punch or metal rod to help line them up. You may also find the need to drill out the holes slightly.

9. Level each section and tighten all hardware.
10. Attach handrails as shown in Detail F and tighten.
11. Adjust tension of governor to help limit speed. Per Detail B.

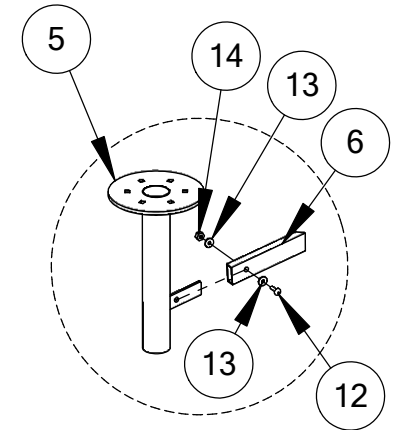
### \*IMPORTANT\*

Please retain this instruction sheet in your files. It contains important replacement parts information. All equipment should be installed in accordance with these instructions.

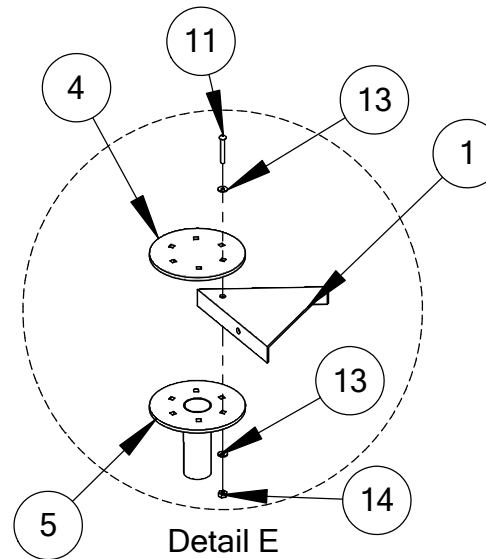
It is important to use and maintain all public playground equipment properly. Playground equipment, which is improperly maintained, can cause serious injury. Periodical inspections, maintenance, repair and or replacement of damaged parts is necessary for safe operation of equipment and safety of users. Resilient surfacing should be used under all playground equipment appropriate publications, available at no charge, from the consumer product safety commission, include a "Handbook for Public Playground Safety". You can receive your free copy by calling 301-504-7908.



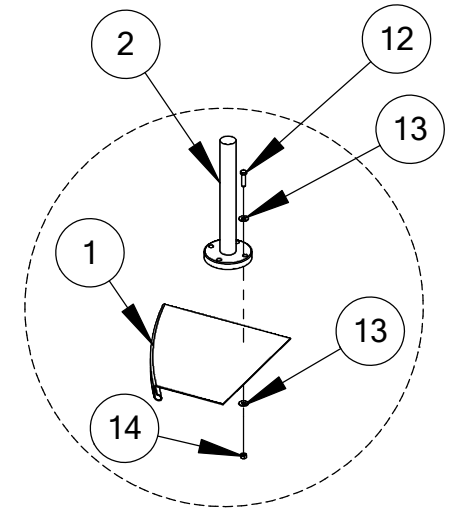
Detail C



Detail D



Detail E



Detail F

