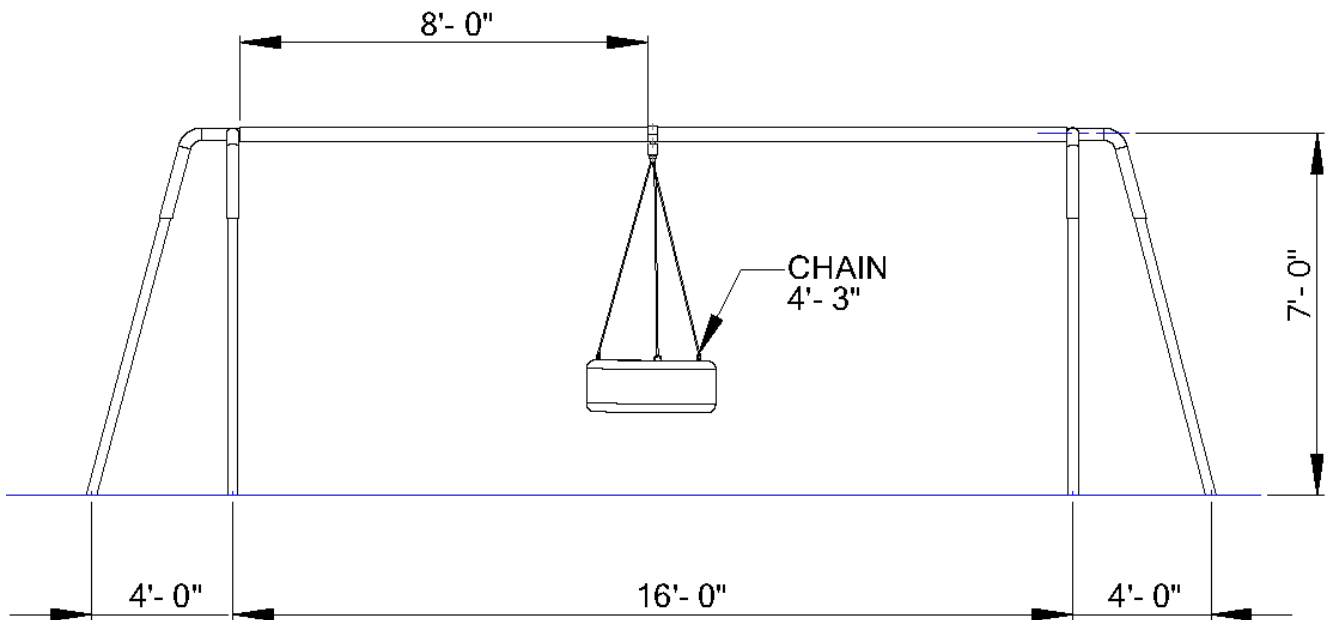


581-367 Heavy Duty Tripod Tire Swing

IMPORTANT

PLEASE READ THESE INSTRUCTIONS BEFORE COMMENCING ASSEMBLY. Please retain this instruction sheet in your files. It contains important replacement parts information. All equipment must be installed in accordance with these instructions. It is important to use and maintain all public playground equipment properly. Playground equipment, which is improperly maintained, can cause serious injury. Periodical inspections, maintenance, repair and/or replacement of damaged parts is necessary for safe operation of equipment. Appropriate publications, available at no charge, from the consumer product safety commission, include "A Handbook for Public Playground safety". You can receive your free copy by calling 1-301-504-7908.



PACKING LIST

1	CTN	1	Hardware Bag
2	WF	1	583-524 Swing End
1	PIPE	1	583-206 A Pipe 3 1/2" OD x 16'
6	PIPE	1	583-605 Pipe 2 3/8" OD x 10'
1	TIRE	1	342-904 Plastic Tire Seat
			OR
1	TIRE	1	342-905 Racing Tire Seat

HARDWARE BAG

1	345-505	HD Tire Swivel
2	196-613	3/8" x 3 1/2" U-Bolt
3	317-140	4/0 Chain x 4'3" long
6	585-901	S Hook
4	326-601	3/8" Lock Washers
4	216-601	3/8" Hex Nuts
10	196-802	1/2" x 1/2" Socket Set Screw
1	416-400	1/4" Socket Key
1	805-532	Warning Label
1	805-534	SportsPlay Label
1		Maintenance Checklist

1 CTN	7 PIPE	2 WF	1 TIRE	11 TOTAL PCS	460# Weight	Class 70
-------	--------	------	--------	--------------	-------------	----------

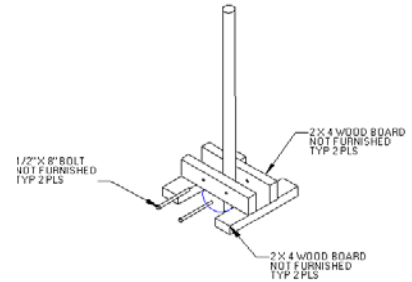
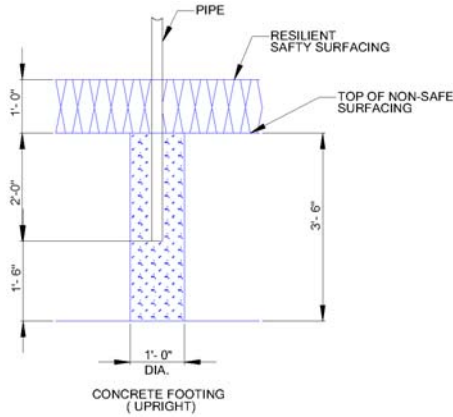
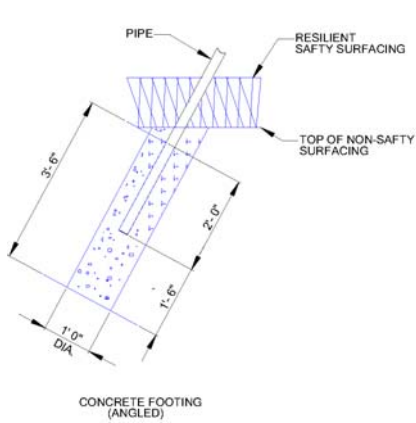
581-367 Heavy Duty Tripod Tire Swing

GENERAL FOOTING RECOMMENDATIONS:

Diameter and depth of footings illustrated are satisfactory in most applications for pipe sizes up to 2 3/8" diameter. Varying soil & climatic conditions may require deeper and heavier footings in some areas. Check local building codes.

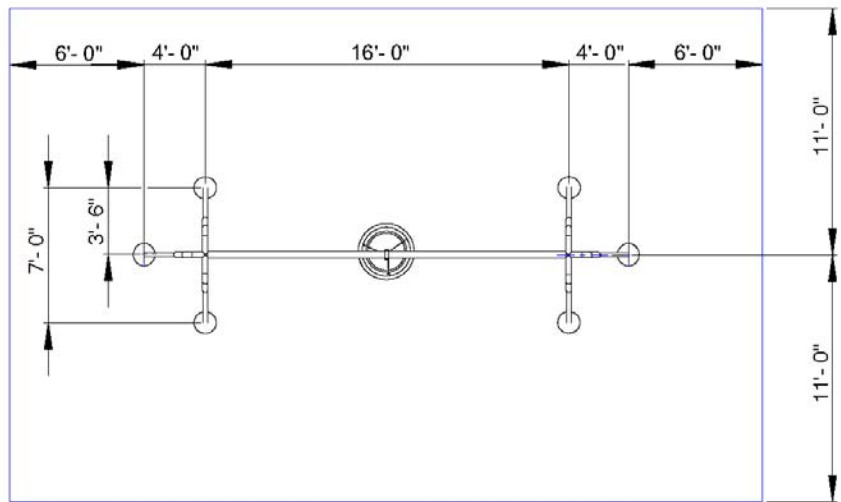
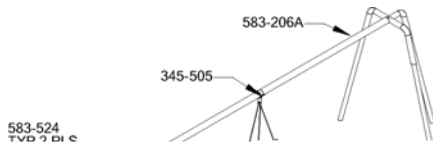
Diagram:
Permanent Installation
Method

Diagram:
Suggested Bracing



- If resilient surfacing is to be less than 12", then additional pipe should be put in concrete to maintain proper finish grade for equipment.

USE AREA AND FOOTING DIAGRAM:



SINGLE AXIS SWINGS:

The use/fall zone should extend to the front & rear, a minimum distance of twice the height of the Top Rail Above the resilient surfacing material. The use/fall zone to the sides should follow the general recommendation of six feet minimum. This six-foot zone may overlap that of an adjacent swing structure.

ROTATING SWINGS:

The use/fall zone should extend in all directions the length of the swing plus six feet. The six-foot minimum fall zone from the supporting structure also applies, and may overlap the six-foot zone of an adjacent swing structure.

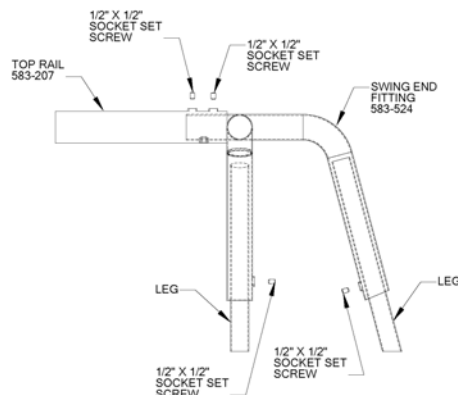
GENERAL MAINTENANCE INSTRUCTIONS:

Check MONTHLY for loose bolts, damaged or broken parts. Tighten and/or replace immediately. On swings and any equipment that uses S-hooks and/or Swing Hangers, check the bearing surfaces for wear. Replace any parts that show a reduction of 25% from the original size.

ASSEMBLY AND INSTALLATION:

NOTE: All threaded ends of bolts protruding beyond nuts must be cut off and/or peened to eliminate sharp edges. No more than two threads should extend beyond face of nut. All washers, "T" nuts, and other fastener hardware used on round pipe or tubing must be hammered down to conform to the curved underlying surface to eliminate catch points. DO NOT tighten nuts more than hand-tight until entire assembly is completed.

STEP #1: Assemble swing frame on side, on ground. If more than one section, assemble section by section. Layout parts so that when frame is erected, Legs will be in approximately correct position.



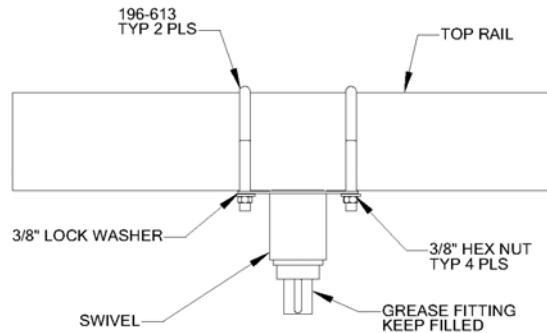
NOTE: Weld Nuts on top rail do not line up with weld nut on fitting. Weld nuts above shown on top for illustration purposes only. Should be on side below horizontal so set screws point downwards.

581-367 Heavy Duty Tripod Tire Swing

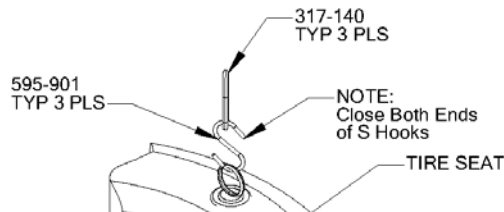
Page 4

Rev. 04/25/2005

- STEP #2: Footing holes may be marked out & dug from footing layout, however, it is generally easier to position Swing in proper location, mark holes, then move Swing to one side & dig holes.
- STEP #3: Stand Swing upright onto Legs & brace in footing holes so that 24" of pipe will be under intended level of resilient surfacing.
- STEP #4: Using S-Hooks, attach tire seat to one end of chain. Close the S-hooks to within .034" (1/32") using S-hook pliers or pounding with a hammer. Attach other end of chains to swivel.
- STEP #5: Attach swivel to Top Rail. SEE STEP #4.



- STEP #6: Attach Assembled Tire Seat to Swivel.



NOTE: Be sure to keep the grease fitting filled with grease.

- STEP #7: Plumb & Level entire unit. Tighten all nuts & bolts until lock washers are flat. Use short length of pipe on end of Socket Key to add leverage when tightening Socket Set Screws. Pour concrete. Wait 48 hours before removing braces, applying resilient surfacing and using equipment.
- STEP #8: Attach Warning Label and Manufacturer's Identification Label to a clean surface. The labels should be attached in a location where they are clearly visible and legible and away from normal hand and foot placement areas. The labels must be replaced if they become illegible, destroyed or are missing. Contact your SportsPlay distributor for replacement labels.