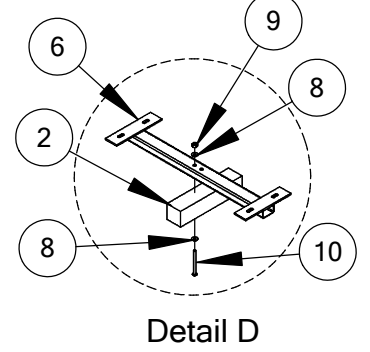
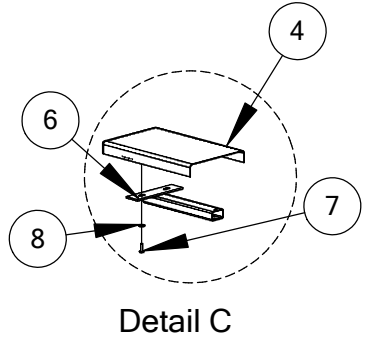
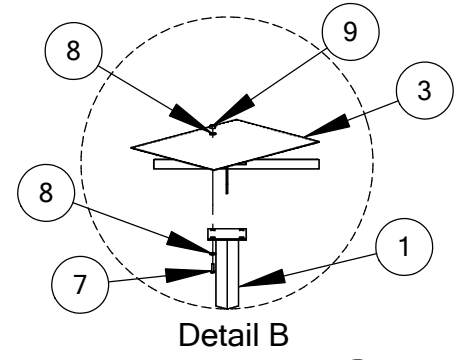
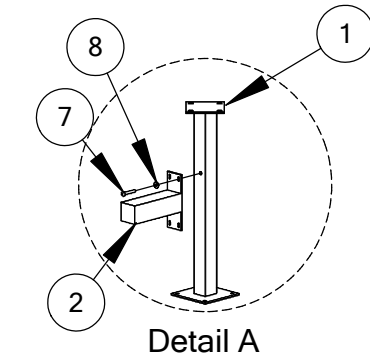




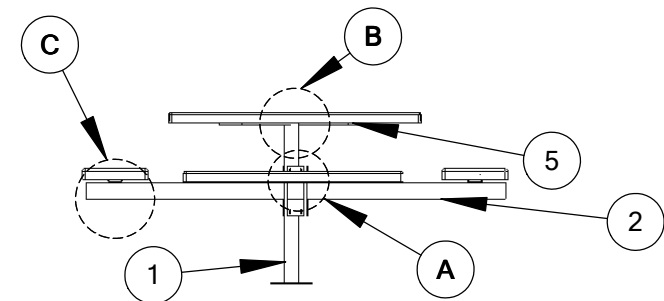
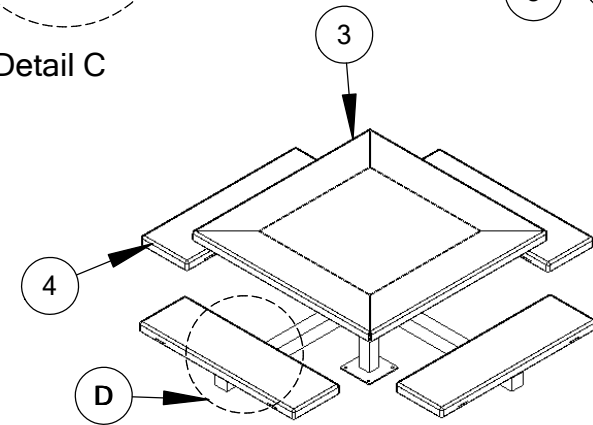
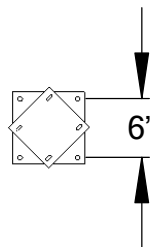
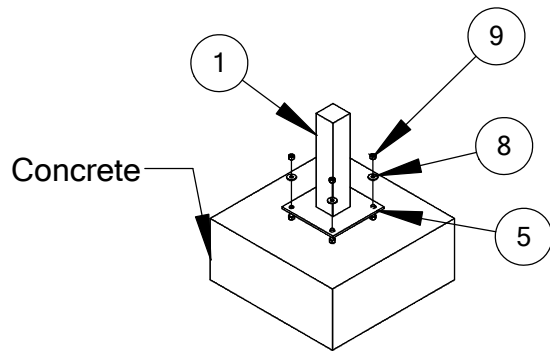
CANTILEVER PICNIC TABLE

601-743

ITEM NO.	PART NUMBER	DESCRIPTION	QTY.
1	613-604	Center Post Cantilever	1
2	613-605	Support Arm Cantilever	4
3	613-601	Square Table Top	1
4	613-602	Square Table Seat	4
5	000-000	1/2" x 4" Anchor Bolts	4
6	613-607	Seat Mount Bracket	4
7	126-707	3/8" x 1-1/2" Button Head Bolt	36
8	316-601	3/8" Flat Washer	96
9	226-601	Lock Nut	12
10	126-705	3/8" x 2" Button Head Nut	12
11	516-400	Lock Tite	1



Mount Detail





CANTILEVER PICNIC TABLE

601-743

Square Cantilever Table Instructions:

1. Place the center post (item 1) in the center of the desired installation location, ensuring the larger of the two mounting plates on each end is positioned on the mounting surface. Each side of the post will have a location with which to connect a support arm (item 2) for the seats, be sure the post's orientation is properly aligned with the desired seat location. Once the post is correctly staged mark the mounting holes from the post's mounting plate onto the concrete and remove post.
 - A. Use the mounting detail as a reference for mounting the following mounting instructions.
2. Drill the marked holes 3.75" deep, using a 1/2" concrete drill bit and hammer drill.
3. Remove the nuts and washers from the anchor bolts (item 5) and place the anchor bolt into the drilled holes.
4. Place the center post back over the anchor bolts apply a small amount of thread lock (Item 11) on the exposed threads of the anchor bolts.
5. Next secure the post using the nuts and washers previously attached to the anchors. Tighten completely.
6. It is recommended that thread lock (item 11) is applied to all bolts except the bolts that attach the table top (item 3) to the center post (item 1) because they will use a lock nut.
7. Using 3/8" x 1-1/2" button head bolts (item 7) and 3/8" washer (item 8) attach the support arm (item 2) to the center post by inserting the bolts and washers through the support arms mounting plate and into the pre-installed nuts on the center post (Detail A). Repeat for remaining support arms.
 - A. **WHEEL CHAIR ACCESSIBLE UNITS** - Simply attach the seat posts across from each other and put caps in center post for the unused mounting options. Be sure to arrange seats straight across for the two seat accessible option.
8. Next attach the table top (item 3) to the center post (Detail B) using 3/8" x 2" button head bolts (item 10), 3/8" washers (item 8) and 3/8" lock nuts (item 9). It is not necessary to apply thread lock to these bolts.
9. Attach the seat mount bracket (item 6) to the support arms (item 2) using 3/8" x 2" button head bolts (item 10) and 3/8" washers (item 8) by inserting the bolts through the top of the seat bracket and into the pre-installed nuts on the support arm (Detail D). Make sure to keep the brackets on the end of the seat mount facing up. They have to be facing up in order to attach the seats.
10. Finally attach the seats (item 4) to the seat mount bracket (item 6) using 3/8" x 1-1/2" button head bolts and 3/8" washer by inserting the bolt through the washer and mounting plates on the end of the seat mount bracket and into the pre-installed nuts on the square table seat (Detail C).