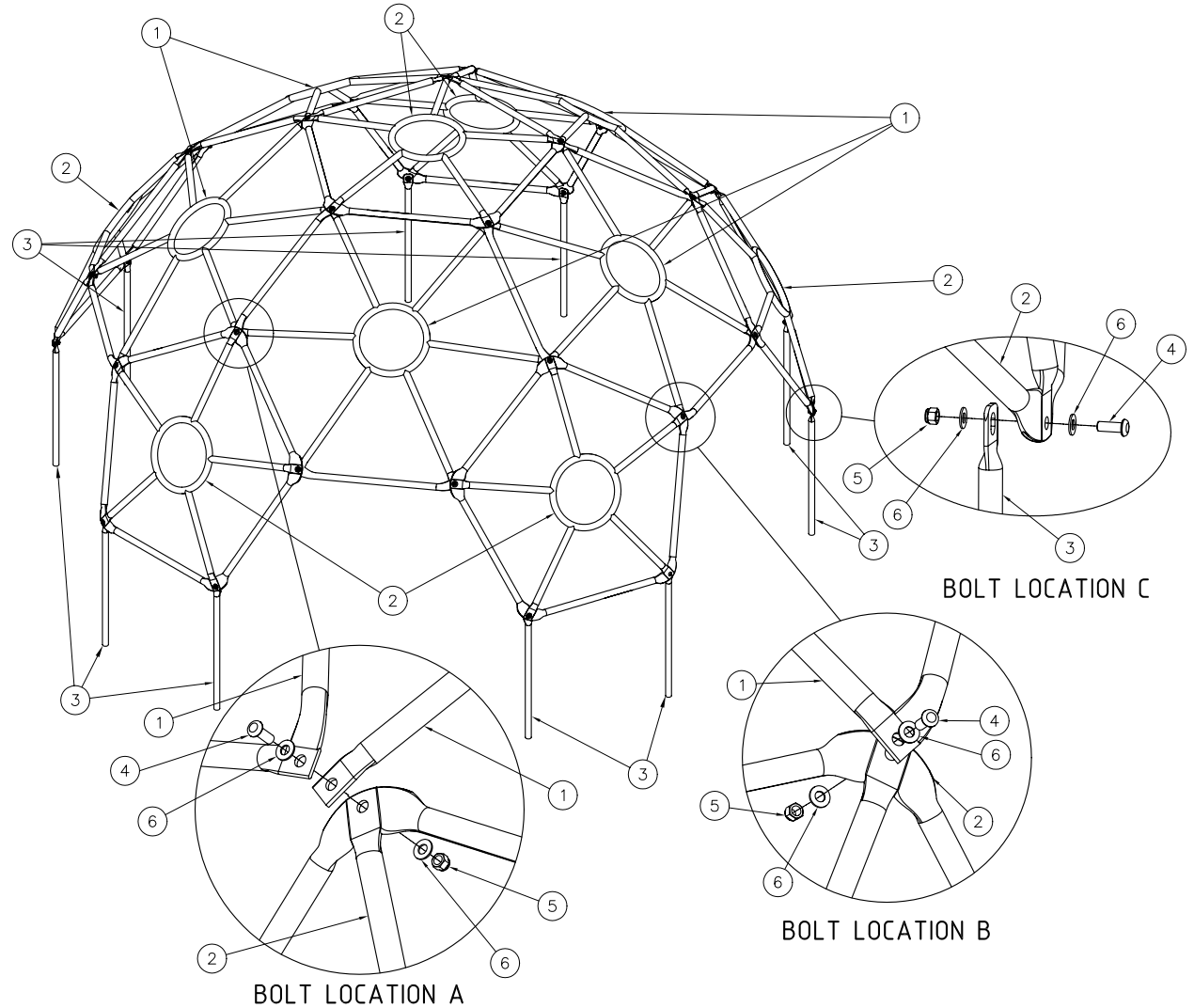
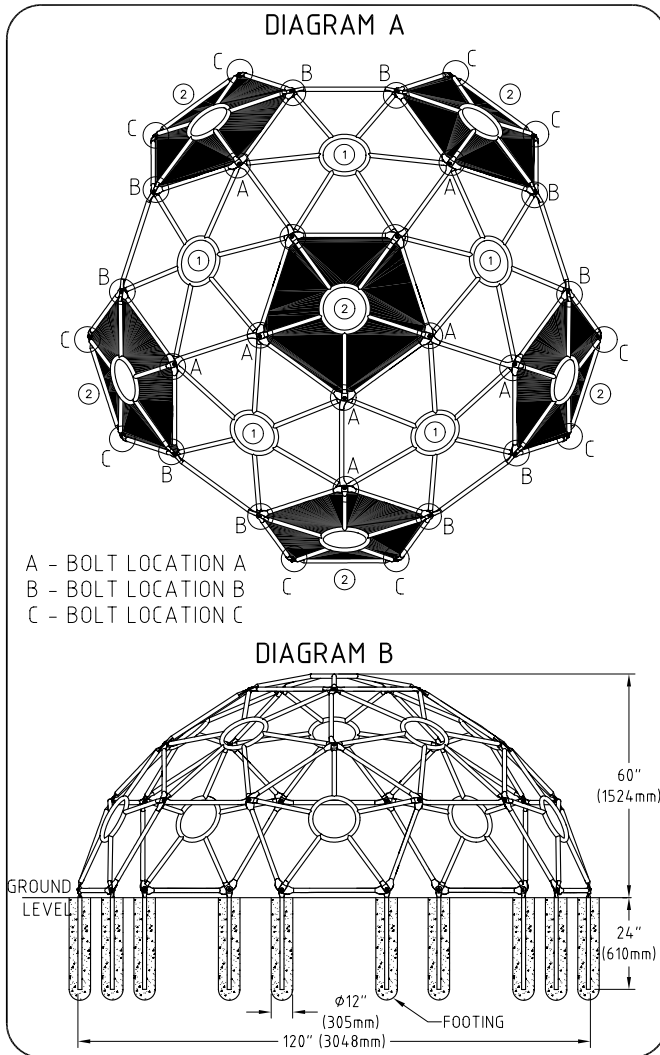


ASSEMBLY INSTRUCTIONS FOR SPACEPOD DOME CLIMBER

MODEL: 75012700
REV: A - 14APR04

PARTS LIST	QUANTITY
① SPACEPOD HEXAGON	5
② SPACEPOD PENTAGON	6
③ INGROUND LEG	10
④ 3/8" - 16 x 1" BUTTON HEAD TORX	30
⑤ 3/8" NYLON LOCK NUT	30
⑥ 3/8" WASHER	60



ASSEMBLY INSTRUCTIONS: READ ALL INSTRUCTIONS BEFORE BEGINNING

- STEP 1: LOOSELY BOLT TOGETHER SPACEPOD PENTAGONS (PART 2 SHADED) AND SPACEPOD HEXAGONS (PART 1) AS SHOWN IN DIAGRAM A. FOLLOW BOLT LOCATION DETAILS A AND B FOR HARWARE ASSEMBLY. ALL INTERSECTIONS SHOULD BE "SHINGLED" WITH THE UPPER COMPONENT ON THE TOP LAYER.
- STEP 2: TIGHTEN SPACEPODS PIECES WHEN FULLY TOGETHER. ATTACH INGROUND LEGS (PART 3) TO SPACEPOD PENTAGONS FOLLOWING BOLT LOCATION DETAIL C. TIGHTEN INGROUND LEGS IN VERTICAL POSITION.
- STEP 3: PLACE ASSEMBLED SPACEPOD CLIMBER IN POSITON AND MARK THE LEG LOCATIONS (ENSURE THAT THERE IS A MINIMUM 6' OBSTACLE FREE PROTECTIVE SURFACE AREA ON ALL SIDES OF THE CLIMBER). MOVE CLIMBER ASIDE AND DIG FOOTING HOLES. THE HOLES SHOULD BE 12" IN DIAMETER AND DEEP ENOUGH TO BRING THE BOTTOM STRUTS EVEN WITH THE PLAYING SURFACE (SEE DIAGRAM B).
- STEP 4: PLACE LEGS OF CLIMBER INTO HOLES. PLACE BLOCKS UNDER BOTTOM OF SPACEPOD PENTAGONS TO HOLD CLIMBER AT CORRECT HEIGHT. FILL HOLE WITH CONCRETE.
- STEP 5: AFTER CONCRETE IS SET, REMOVE BLOCKS. PLACE PROTECTIVE SURFACING UNDER AND AROUND CLIMBER. DO A THOROUGH AND COMPLETE FINAL INSPECTION BEFORE EQUIPMENT IS USED.