

**FREESTANDING LILY PADS**

**#90021100XX - 5 PADS**

**#90021200XX - 3 PADS**

**USER GROUP:** 2-12 years

**RECOMMENDED CREW:** 1 person

**TOOLS REQUIRED:**

T-45 TORX Tool (supplied by manufacturer)

Shovel / Post Hole Digger / Auger

1/4" Allen Head Wrench

Level

**INSTALLATION TIME:** Approximately 1 hour

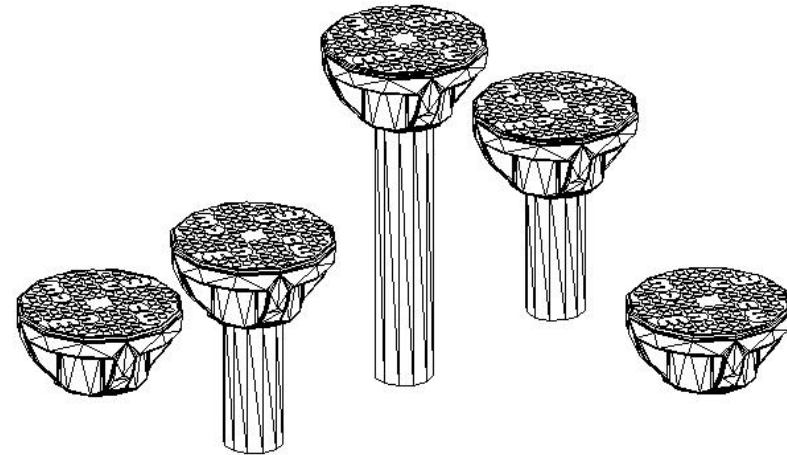
**WEIGHT:** 120 lbs. (5 pad) / 48 lbs. (3 pad)

**CONCRETE REQUIRED:** 7.85 cf (5 pad) / 4.71 cf (3 pad)

**NOTE:** Concrete must have a minimum rating of 2,500 psi and must be mixed per manufacturer's recommendations.

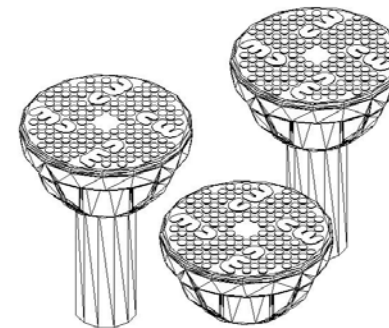
**FREESTANDING LILY PADS**

**#90021100XX - 5 PADS**



**FREESTANDING LILY PADS**

**#90021200XX - 3 PADS**



**PRE-INSTALLATION CHECK:**

Compare all items received to the packing list. Notify your local sales representative immediately if any parts are missing or damaged.

**We are not responsible for items discovered missing after 72 hours from time of delivery!**

Before beginning installation, make sure that you have read and understand the **Installation Introduction** manual that was supplied to you. If you did not receive a copy, or if you have a question regarding anything covered in this manual, contact you local sales representative.

## INSTALLATION GUIDELINES

### **STEP 1**

Refer to PLAN VIEW and FOOTING LAYOUT to locate position of freestanding lily pads.

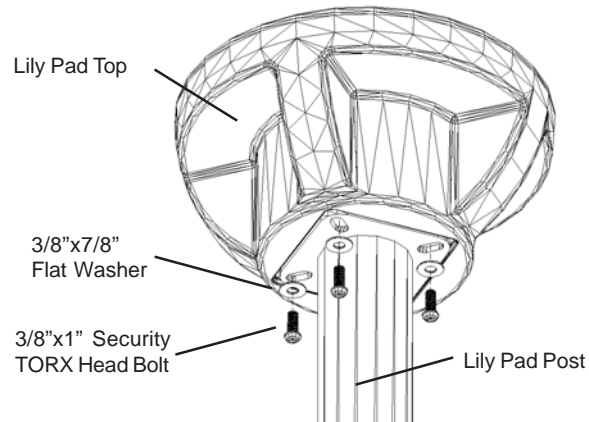
### **STEP 2**

Excavate footing holes as shown in FOOTING LAYOUT and FOOTING ELEVATION. Place a 2" spacer block in the bottom of each hole.

### **STEP 3**

Select one lily pad top, one lily pad post (any length), four 3/8"x1" security TORX bolts and four 3/8"x7/8" flat washers. Secure top to post by inserting bolt through washer, post and into top (see Detail A). Repeat for remaining posts and tops. **NOTE:** For the 5 pad version, there will be one 60" post, two 48" posts and two 36" posts. For the three pad version, there will be one 48" post and two 36" posts.

### **Detail A**



### **STEP 5**

Place posts in footing holes as shown in ELEVATION DETAIL and FOOTING LAYOUT.

### **STEP 6**

Brace lily pad posts to correct height (see ELEVATION DETAIL), making sure they are level and plumb.

### **STEP 7**

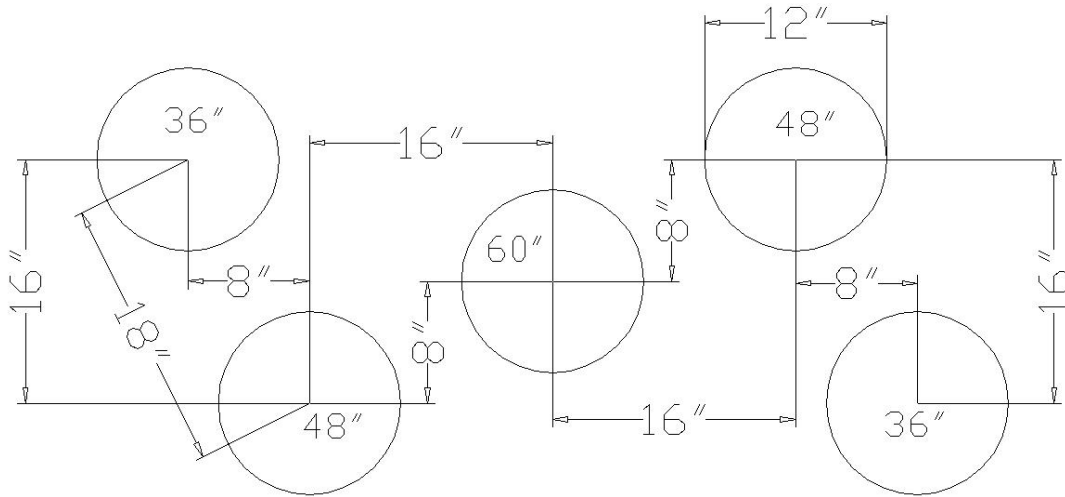
Pour concrete into footings to correct level. **NOTE:** Concrete must have a minimum rating of 2,500 psi and must be mixed per manufacturer's recommendations. **Allow concrete to harden for at least 48 hours before use.**

### BILL OF MATERIALS PART / HARDWARE LIST - 5 PAD 90021100XX

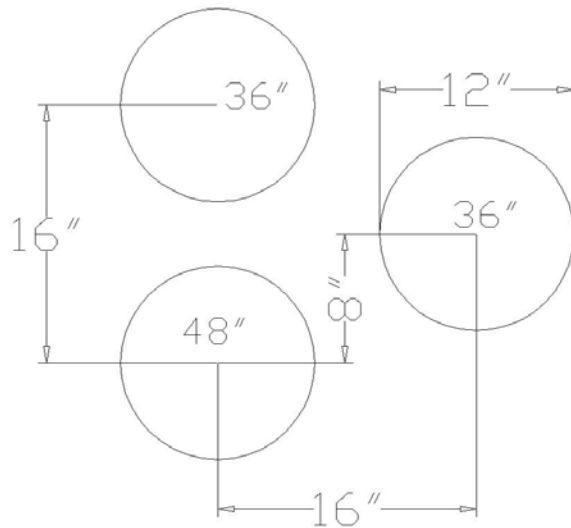
ITEM #	QTY.	PART NO.	DESCRIPTION
1	5	SSTXX	Lily Pad Top
2	2	30107368XX	Lily Pad Post - 36"
3	2	30107488XX	Lily Pad Post - 48"
4	1	30107608XX	Lily Pad Post - 60"
5	20	2080011192	Bolt - 3/8"x1" Security TORX Head w/Patch
6	20	2090010492	Washer - 3/8"x7/8" O.D.

### BILL OF MATERIALS PART / HARDWARE LIST - 3 PAD 90021200XX

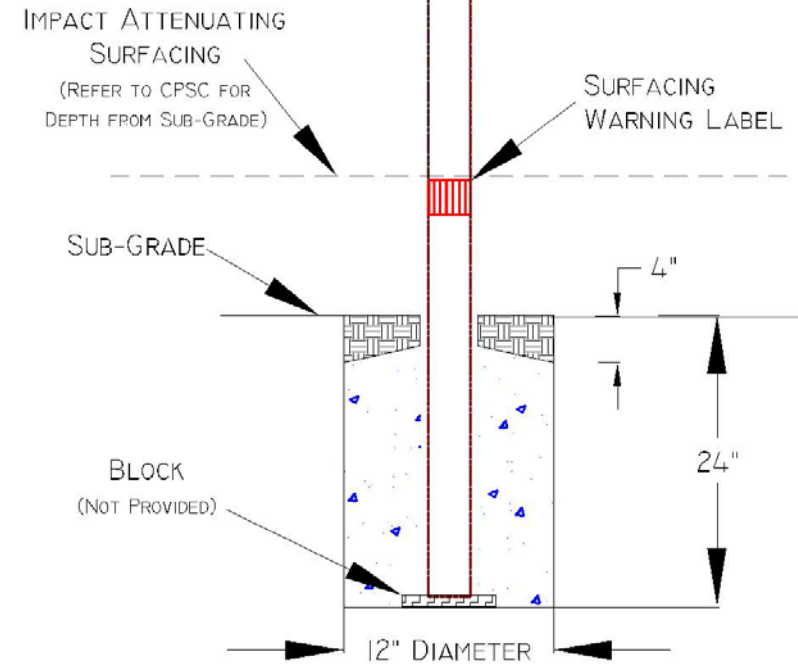
ITEM #	QTY.	PART NO.	DESCRIPTION
1	3	SSTXX	Lily Pad Top
2	2	30107368XX	Lily Pad Post - 36"
3	1	30107488XX	Lily Pad Post - 48"
4	12	2080011192	Bolt - 3/8"x1" Security TORX Head w/Patch
5	12	2090010492	Washer - 3/8"x7/8" O.D.



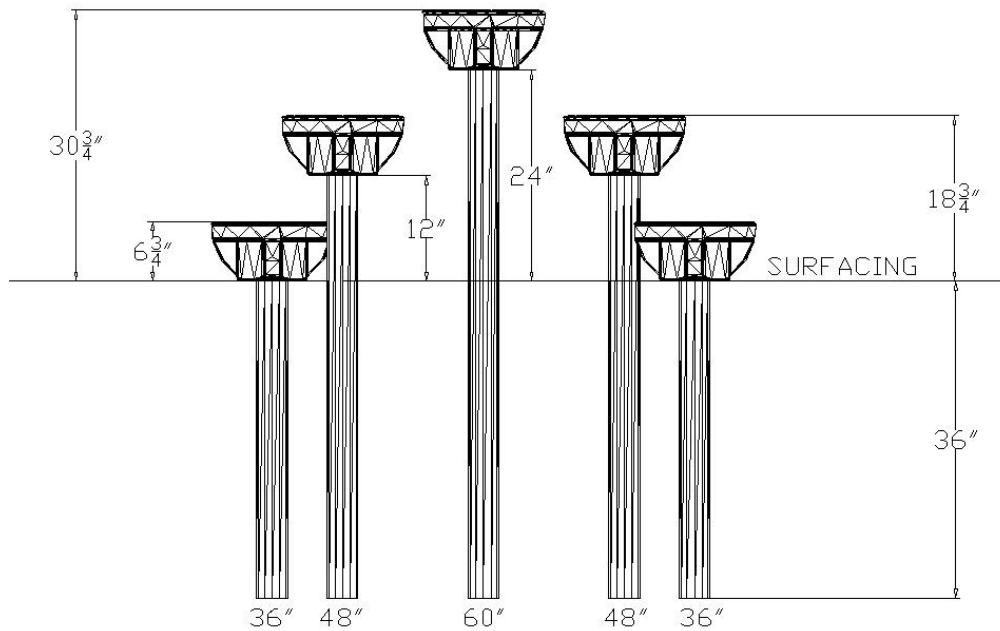
**FOOTING LAYOUT - 5 PAD**



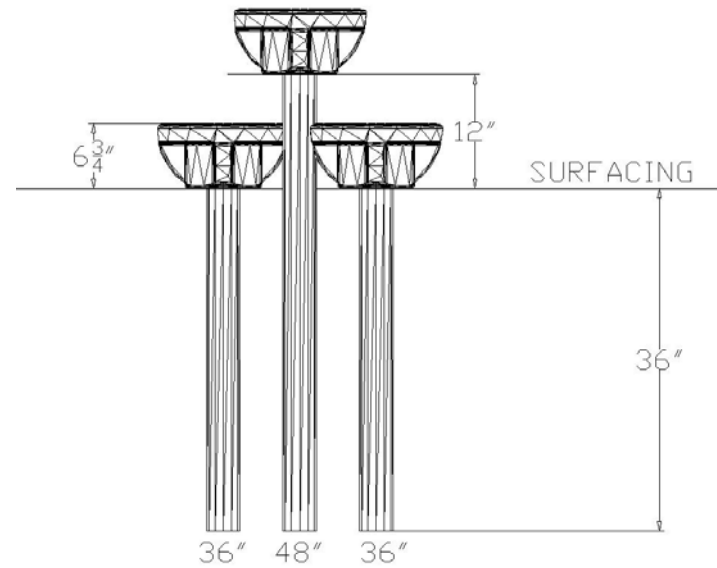
**FOOTING LAYOUT - 3 PAD**



**FOOTING ELEVATION - BOTH**



**ELEVATION DETAIL - 5 PAD**



**ELEVATION DETAIL - 3 PAD**

## PRODUCT SPECIFICATIONS

### **HARDWARE**

- Tamper resistant
- Special tool required for install

### **LILY PAD TOP**

- 1st quality linear low density Polyethylene (ExxonMobil LL8450)
- Rotational molded
- 2,550 psi tensile strength (ASTM D638)
- UV stabilized
- Anti-static inhibitors

### **LILY PAD POST**

- 5" round steel tube
- 11 gauge steel
- Manufactured per ASTM 500
- 50,000 psi yield strength (ASTM E-8)
- 55,000 psi tensile strength (ASTM E-8)
- Triple Flo-Coated corrosion protection (interior and exterior)
- Interior and exterior corrosion resistance (ASTM B-117)
- Powder coat finish

### **PRETREATMENT WASH PRIMER**

- 4860-420 primer / 1000-44 activator
- Polyvinyl-butylal resin based primer
- Used on all mild steel and all weld joints
- Designed to give adhesion to a wide variety of metal substrates
- Provides added metal protection against rust
- Imparts extra durability to topcoat (powder coat)
- When reduced properly, it meets the definition of a "pretreatment" primer found in many air quality regulations

### **POWDER COAT FINISH**

- TGIC Polyester
- Electrostatic application
- Baked-on @ 400 degrees
- 5-7 mills thick
- Lead free
- High gloss
- No peel / No flake finish
- Resistant to salt spray (ASTM B117)
- Resistant to humidity (ASTM D2247)
- Direct/Indirect impact 120 in. pounds (ASTM D2794)
- Good to excellent resistance to most solvents, oils, acids and alkalies