



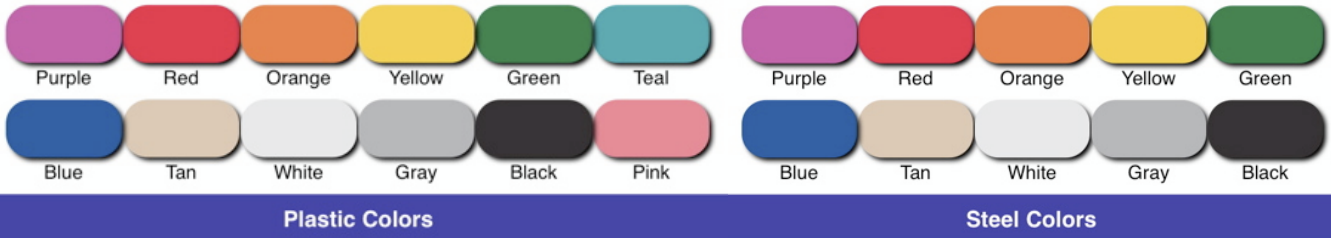
SportsPlay Equipment, Inc.
565642 Natural Bridge St. Louis, MO 63120

GENERAL SPECIFICATIONS FOR 3.5" MODULAR UNITS

STEEL TUBING: Our components and structural posts are made from Allied Steel and Conduit. The following types of tubing, which are referred to in the specifications. #1 is 1" O.D., 14 Gauge. FloCoat galvanized, #2 is 1.315" O.D., 14 Gauge. FloCoat galvanized, #3 is 1 1/2" 14 Gauge. Tube, #4 is 1.9" O.D. 11 Gauge. FloCoat galvanized, #5 is 2 3/8" O.D. 11" Gauge. FloCoat galvanized. The patented in-line triple zinc coating process provides a smooth shiny uniform appearance with up to 25% greater corrosion resistance than galvanized schedule 40 pipe along with greater strength and lighter weight for comparable sizes.

WARRANTY: SportsPlay offers the following warranties on the materials and components of its' modular units.

- LIMITED LIFETIME WARRANTY on steel support posts and clamps.
- 15 YEAR LIMITED WARRANTY on main support materials and decks.
- 10 YEAR LIMITED WARRANTY on all plastic components.
- 1-YEAR WARRANTY on all products not listed above.



UPRIGHT POSTS: 3.5" O.D. FloCoat galvanized, triple-coat corrosion protection 11Gu. 120" wall, powder coated, with an ASTM standard A-500 yield strength of 40,000 PSI and tensile strength of 45,000 PSI. Zinc dome style top cap is factory riveted with stainless rivet.

POWDER COATING SYSTEM: All parts shall be steam cleaned and have a baked-on electrostatically applied polyester dry powder coating. All products shall be oven baked at 400 degrees F to ensure superior paint adhesion.

ROTATIONALLY MOLDED PLASTIC PARTS: Shall be molded from linear low density polyethylene with UV light stabilizers, anti-static guard and color molded in. This material shall comply with ASTM-D-790, ASTM-D-638, ASTM-D-648 and ARM-STD and shall have a nominal 6mm wall thickness, exceptions shall be noted.

FASTENER SYSTEM: This unit shall be assembled via direct bolt tabs that have been welded to all components. Tabs shall be attached to posts with a rubber casket to ensure attachment is secure and snug to post. Direct bolt will be via self-tapping screw.

AAA State of Play
10725 Hidden Oak Way
Indianapolis, IN 46236
www.aastateofplay.com



Local (317) 826-2777
Toll Free (877) 826-2776
Fax (317) 823-3567

HARDWARE: We use stainless steel, vandal-resistant hardware: button head cap screws. Hex and carriage bolts, washers, lock nuts.

STEEL DECKS: All deck openings shall be 45" O.C. Decks shall be made of #12 Gauge by 3/4" flattened, punched metal, welded to 2 1/2" by 2" by 18" angle frame, 1/4" endplates, center bracing, plastisol coated and oven cured. Square deck is 45" by 45" (2,025 sq. inches).

ARCH CLIMBER: Type #4 steel side-rails welded to type #2 rungs by 24" long. rebar anchor to ground, comes with two handholds.

ARCH BRIDGE: 32" wide by 10' long bridge, handrail is type all #2 steel with endcaps; vinyl coated planks #9 Gu. expanded with 1 1/2" by 2" angle frame, center support is type #4 steel with end caps.

CHIN/TURN/GUARD BARS: Type #2 steel, 48" long with two clamps, powder coated.

CHAIN NET: Angle connection to deck, chain is 4/0 galvanized and plastisol covered. Chain connects to ground with type #2 steel support, via "S" hooks to net. Comes with handholds.

CORKSCREW CLIMBER: Type #4 steel center pole welded to 24" diameter by 1 5/8" O.D. coil. Angle plate connects to deck. 1" O.D. handholds welded to support.

CIRCLE (HALF) CLIMBER: Side-rails are type #4 steel welded to form "S". Circle rungs (24" diameter) entry pipes, ground pipes are type #2 steel arch entry panels (2) handholds.

CIRCLE (INCLINED HALF) BRIDGE: 10' siderails and 24" diameter circle rungs are same as above. Connects to deck with type #2 steel arch entry panels (2).

CATERPILLAR CLIMBER: 10' siderails and 24" diameter circle rungs are same as above (5) total, includes (2) entry pipes, and (2) handholds.

CRAWL TUNNEL: 4' Plastic, linear low density. 3/8" wall tunnel has (2) rotationally molded, high density, U.V. stabilized, end panels, toggle bolt connected. Panels connect to posts with (4) 45" type #2 pipes and fastened with direct bolt method.

CRAWL TUNNEL (90 DEGREE): End panel and tunnel description same as above, joint are "bell-flange overlap".

FIREPOLE: Type #2 steel, bent to "L", includes handhold.

HORIZONTAL LADDER (WAVY): 10.5' long by 28" wide, siderails are type #4 steel, rungs are 15" O.C. and are type #2 steel, end sleeve connections and 48" end pipes (type #3) connect ladder to deck posts.

HORIZONTAL LADDER (STRAIGHT): Same as above, top rails are straight.

HORIZONTAL LADDER ("S" STYLE): Same as above except that it is welded to "S" shape with 24" and 48" radius bends.

HANDHOLD (REGULAR): 38" type #2 steel bent to 8" radius, includes two handholds.

HANDHOLD (LARGE): Same as above but with 52" tube bent to 12" radius.

LOG ROLL: U.V. stable molded polyethylene. 48" long by 16" diameter roller connects to type #5 steel pipe, 57" long with galvanized end stubs, via clamps to posts. Includes (2) handholds.

LOOP CLIMBER (ZIG-ZAG): The (10) triangle rungs, end pipe connection same as above, (2) top rails come together with 2 7/8" O.D. center yoke with (2) 1' long by type #4 steel center posts.

PLASTIC PANELS: All rotationally molded plastic panels shall be molded from linear low-density polyethylene with ultraviolet light stabilizers and anti-static guard and color molded in. Panels shall attach to posts via (2) type #2 46" long pipes via direct bolt and rubber gasket and self-tapping screw.

PANEL BUBBLE WINDOW: Clear lexan bubble bolts to panel with stainless steel pneumatic heads. Fastened to post as above.

PANEL CONCENTRATION: (18) moveable blocks refer to safety signage. Each block has separate sign. Fastened to post as above.

PANEL MIRROR: Mirror is from 1/8" thick polycarbonate with silver backing, with a steel back frame.

RING CLIMBER: 12" long type #5 steep top rail with (9) high tensile eyes and (2) end sleeves, which connect to deck with 46" end-pipes and (4) clamps. 6" O.D. aluminum rings connected via 3/8" galvanized "S" hooks.

ROOF: Solid 5/16" wall plastic, pyramid roof has reinforced-ribbed construction. Roof shall be molded from linear low-density polyethylene with ultraviolet light stabilizers and anti-static guard and color molded in.

RHYTHM AND BLUES CLIMBER: (2) type #5 steel pipes, each 8' long, act as foot and hand base, each bent to "S" connects to deck post via (2) clamps, then to separate 8' vertical 2 3/8" O.D. post via welded sleeve ends with set screw.

SLIDE GUARD: (2) type #2 steel pipe, 36" long bent to 90 degree welded to a 45" long type #2 steel pipe, attaches to post via direct bolt method.

STRAIGHT SLIDE AND WAVE SLIDES: 3/8" wall, rotationally molded, 24" wide bed with a 6" high siderail. Slide shall be molded from linear low-density polyethylene with ultraviolet light stabilizers and anti-static guard and color molded in. Slide shall bolt to deck via direct bolt method. Slide shall be attached to ground via "T" legs in ground with rebar connection. Fits 3', 4', 5', and 6' deck height.

90-DEGREE SLIDE: Double wall, 3/8" slide shall be molded from linear low-density polyethylene with ultraviolet light stabilizers and anti-static guard and color molded in. Right turn slide has channel/pipe legs with rebar connection to ground plus a 2 3/8" O.D. side leg with plate to threaded inserts. Slide fits a 4' deck, 4" sidewalls.

TRIPLE RAIL SLIDE: 3/8" double wall construction side shall be molded from linear low-density polyethylene with ultraviolet light stabilizers and anti-static guard and color molded in. Slide shall bolt to deck via direct bolt method. Slide shall be attached to ground via "T" legs in ground with rebar connection. Has two slide beds with 4" high sidewalls. Fits 3' or 4' deck comes with slide guard included.

SPIRAL SLIDE TO 5' and 6' DECK: Slide shall be molded from linear low-density polyethylene with ultraviolet light stabilizers and anti-static guard and color molded in. Slide shall have 3 1/2" O.D. center pole and is a solid one-piece mold. Entry hood is molded into this one-piece design. Slide shall be attached to ground via "T" legs in ground with rebar connection.

TUBE SLIDE: Slide shall be molded from linear low-density polyethylene with ultraviolet light stabilizers and anti-static guard and color molded in. 3/8" wall, 24" O.D. Tube connects straight section with elbows. Panel entry connects to deck with bottom leg. Fits a 4', 5', 6' deck. Slide shall be attached to ground via "T" legs in ground with rebar connection.

“S” TUBE SLIDE: Same as above with 30 degree elbows combined with straight sections to form “S”. Has bottom and side legs and fits 4’, 5’, and 6’ deck. Panel entry fits the 30” diameter slide to deck. Has flange style joint system.

STEERWHEEL: Polycarbonate 12” diameter wheel countersunk wheel hub connects to wall with non-slip double plate, center ½” bolt and lock nut.

SWINGING BRIDGE: Guardrails are type #4 steel double 119” horizontals with (10) 24” long vertical rungs welded 24” O.C. End fill blocks are 42” long by 4” square, 11 Gauge tube with ¼” triangle plate connections to 5/16” galvanized chains. Planks are 45” by 12” vinyl coated, with #9 gauge expanded metal framed in 2” by 2.5” angle frame. Available in treated wood planks. Large aluminum “T” clamps connect ends. Bridge weight load capacity is 3,800 lbs.

STEPLADDER: Connects to 3’, 4’, 5’ deck, 7 ¼” step and 8 ½” riser fabric is #9 gauge hot roll, top and bottom angle connection to deck and ground with ground legs. Entire ladder is PVC coated after fabrication. Arch entry wall is all type # 2 steel.

TALK PHONES: Submarine style phones are 90-degree street elbows, galvanized with (2) screens each; in ground PVC elbows connect between 1.9” O.D. flex hose.

TRACK RIDE: 10’ long pre-made track connects to posts via (4) deck clamps, included, to 1 ½” by 3” rectangular tubing. Track has double end bumpers. Handhold is 1” O.D.

TRANSFER POINT: Consists of two (12” wide) PVC coated steps from 36” and 48” high deck to final 15” high square deck with (4) upright posts, (4) handrails, (2) large handholds.

“U” CLIMBER: (4) half circles, 16” diameter welded to vertical “L” pipe all type #2 steel, top sleeve connects with 45”, rebar connection to ground.

U.F.O CLIMBER: Circular horizontal ladder exits from and enters same deck. Siderails and rungs are 1 7/8” O.D. vertical supports 10.5’ long.

VERTICAL CLIMBER: The vertical ladder with built in handholds are made from type #3 steel and connect to deck via direct bolt method. Rungs are 12” O.C. to 3’, 4’, and 5’ decks.

T-T-T PANEL: (9) moveable blocks fabricated from linear low-density polyethylene with ultraviolet stabilizers anti-static guard and color molded in. Frame shall be fabricated from 1 3/8” powder coated steel.

SQUARE ROOF: Solid 5/16” wall plastic, pyramid roof has reinforced-ribbed construction and connects via (4) clamps, (4) type #2 steel, 24” extensions.

HEX ROOF: Slide shall be molded from linear low-density polyethylene with ultraviolet light stabilizers and anti-static guard and color molded in. Solid 5/16” wall plastic roof has reinforced-ribbed construction and connects via direct bolt, (6) type #2 steel, 24” extensions.

STEPPING STONES: Shall be fabricated from ¾” polyethylene plastic that shall have UV stabilizers added to ensure colors remain vivid. Mounting post shall be fabricated from 2 3/8” powder coated steel.

STORE PANEL, FINGER MAZE PANEL, BUS PANEL, BALL TURN, DRIVING PANELS: Shall be fabricated from ¾” polyethylene plastic that shall have UV stabilizers added to ensure colors remain vivid. Panels shall be routed using a CNC automated process with edge bit to ensure all deficits are smooth and rounded. Panels will mount via direct bolt attachment.

CASTLE THEME PANELS: Themed panels shall be fabricated from ¾” polyethylene plastic that shall have UV stabilizers added to ensure colors remain vivid. Panel themes shall be routed using a CNC automated process with edge bit to ensure all deficits are smooth and rounded.

MOUNTAIN CLIMBER PANEL: Shall be fabricated from ¾” polyethylene plastic that shall have UV stabilizers added to ensure colors remain vivid. Rock grips shall be fabricated from solid polyethylene plastic.

WALL: Ten rung walls are 38” tall 3.45” between rungs connects via direct bolt. Horizontals are type #3 and verticals are type #1 steel tube.

AAA State of Play
10725 Hidden Oak Way
Indianapolis, IN 46236
www.aaastateofplay.com



Local (317) 826-2777
Toll Free (877) 826-2776
Fax (317) 823-3567