

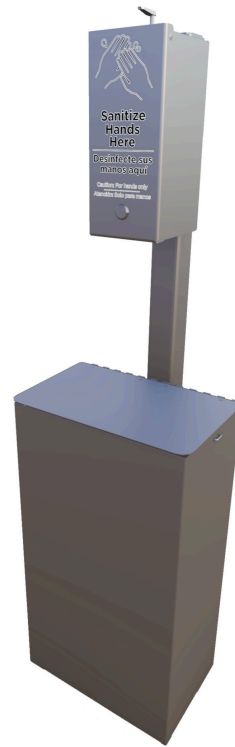
Post-Mounted Pump-Style Hand Sanitizer Holder with Trash Receptacle (Compatible with 28 oz. Pump Bottles)

MSRP \$656.00

SALE \$558.00

Highlights:

- Hand sanitizer bottle and liquid sold separately
- Instructions in English and Spanish create an inclusive station
- Combo receptacle and sanitizing dispenser minimizes space requirements
- Built using 20-gage aluminum to create a long-lasting unit



Keep your school, park, or business in pristine condition with the Post-Mounted Pump-Style Hand Sanitizer Holder with Trash Receptacle (Compatible with 28 oz. Pump Bottles). Guests can throw their garbage away in the attached waste bin and disinfect their hands with the sanitizing enclosure above. This is an easy and convenient way to prevent germ spreading, especially if there are no restrooms nearby. The receptacle is 12-5/16 inches wide x 8 inches deep and 23 inches tall, ensuring that it will fit in compact spaces. The sanitizer enclosure features an adjustable shelf to accommodate a variety of bottles (bottle and sanitizer not included). A precious commodity, the sanitizing enclosure also includes a lock to prevent theft. The structure is painted in an oven cured powder coat to create a durable, long-lasting finish. A large assortment of color options are available to customize the unit to your venue. Choose an in-ground mount to securely affix the structure to soil or select a surface mount to position it in place on concrete or other hard surfaces.